

NELLA GOLANDA **Urban Landscape Sculptor**

POB 77030 Paleo Faliro 17562

Mobile: +30 6973 885027

e-mail: nella.golanda@gmail.com , a.space.ia@gmail.com

nella-golanda.blogspot.gr

<https://www.facebook.com/Nella-Golanda-1102281093219164/>

www.linkedin.com/in/nella-golanda

www.sculpted-architectural-landscapes.gr/

Inhabited Sculpted Landscapes in Public Space

Since 1972 **Nella Golanda**, Landscape Sculptor (Athens School of Fine Arts, First honorary member of the Pan-Hellenic Association of Landscape Architects 2008) has applied “TOTAL ART” in public spaces, re-establishing in human scale the relation between nature and historical landscape, aiming to regenerate life to the contemporary metropolitan cities. The visitors are guided to experience new different ways and develop new social relations in public spaces. These “live” sculptures function as interactive experimental landscapes where the creation of new art genres is possible. Art gets out of the museums and becomes a part of everyday life.

Κατοικημένα Γλυπτά Τοπία στο Δημόσιο Χώρο

Η άρση του ‘αδιάφορου’ και ο εξανθρωπισμός του δημόσιου χώρου στις σύγχρονες μεγαλουπόλεις, συγκροτούν τον βασικό προσανατολισμό των επεμβάσεων από το 1970 έως σήμερα.

Με εργαλείο τις αρχιτεκτονικές, γλυπτικές διαμορφώσεις συνολικού τοπίου (ART TOTAL) στο Δημόσιο χώρο στοχεύει στην επανίδρυση σχέσεων στο ανθρωπογενές και ευρύτερο περιβάλλον. Το “ΝΕΟ ΤΟΠΙΟ” που στο σχεδιασμό του περιλαμβάνει και την βίωσή του από τον επισκέπτη, δεν είναι απομονωμένο, δεν φυλάσσεται στα μουσεία, ούτε αποτελεί την ιδιοκτησία ενός ατόμου, ανήκει σε όλο τον κόσμο, γίνεται καθημερινός τρόπος ζωής.

Ζώντας στο εσωτερικό των έργων τέχνης εκμεταλλευόμαστε την δυνατότητα του να γίνονται μέλη της αστικής ζωής.

Προσανατολισμός Σχεδιασμού

- ▶ Ο άνθρωπος – κλίμακα συμπεριλαμβάνεται στο σχεδιασμό, καθώς και ο καθημερινός τρόπος διαβίωσης.
- ▶ Αντιμετώπιση του χώρου, ως κατοικήσιμο γλυπτό, συνολική σχεδιαστική λύση *Art Total*.
- ▶ Ανίχνευση των φυσικών ρυθμών και φαινομένων που τον διατρέχουν.
- ▶ Ανάπτυξη διαλόγου με το ευρύτερο ιστορικό και φυσικό περιβάλλον.
- ▶ Ανάδυση ξεχασμένων τρόπων διημέρευσης στο μεσογειακό τοπίο.
- ▶ Ο καθημερινός τρόπος βίωσης του γλυπτού χώρου να δίνει δυνατότητα πυροδότησης απρόβλεπτων γεγονότων, τεχνών και έκφρασης, ευνοώντας τις ανθρώπινες σχέσεις και την δημιουργικότητα, στις σύγχρονες αδιάφορες μεγαλουπόλεις.

Her **TOTAL ART** interventions are studied in international universities, congresses, books and architectural magazines

1. INHABITED SCULPTED PUBLIC SPACES
2. SCULPTED HOUSES
3. THE WAY FROM 2 TO 3 DIMENSIONS
4. ENGRAVINGS



1. The INHABITED SCULPTED PUBLIC SPACES,

belong to everyday visitors, they are not isolated, they are not property of museums or private collections, they are parts of urban everyday life, contributing to the formation of new human relations.

Public Space – Total Art Interventions

1976 - 82 “Flisvos Central Square”

Paleo Faliro municipality, Attica, Greece



1984 - 86 “Flisvos Sculptured Quay”
Paleo Faliro municipality, Attica, Greece



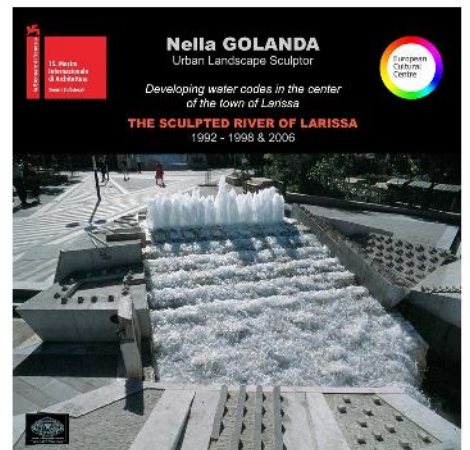
1984 – 92 “Aixoni Quarry Sculpted Theater”
Glyfada municipality, Attica, Greece



**“Developing water codes in the center
of the town of Larissa”
“The Sculpted River of Larissa”
a), b), c)**

**Official candidate of Greece
in the 5th Landscape Award Session 2016-2017
of the Council of Europe
in the context of the European Landscape Convention.**

**a) 1993 – 96 “The Post Square” and
“The Sculpted River (Sections I-II)”**
In the historical center of Larissa town,
Thessaly, Greece



**b) 1996 - 98 “The Sapka Square” and
“Section III of the Sculpted River”**
The central square of Larissa town,
Thessaly, Greece



**1992 – 93 “Pedestrian-Bicycle Path
of 3km along the seashore,
connecting Rafina with Marathon”**



**1986 - 06 “Realization of the 1st Prize
for the Paleo Faliro Municipality
surrounding Landscape”**

Attica, Greece



**c) 2005 - 06 “An archaeological Landscape
Intervention in the pedestrian zone
of the Ancient Theater of Larissa
3rd century b.c.”, Thessaly, Greece**



■ All above Projects were constructed in collaboration with the Specialized Scientists of the Municipalities' Technical Services, except from the “Sapka Square” and the “Pedestrian-Bicycle Path of 3km along the seashore, connecting Rafina with Marathon” which were constructed in collaboration with The Special Works Department of the Public Works Ministry.



■ Since 1995 she collaborates with Aspasia Kouzoupi, in that time still an Architecture Student in Aristotle University of Thessaloniki. In 2000 they become associates co-founding the team “**SCULPTED ARCHITECTURAL LANDSCAPES ®**”, **GOLANDA + KOUZOUPI** (Urban Landscape Designer-MAS.LA.ETHZ) collaborating in large scale, public space projects :

1994 - 97 “Dionyssos Quarries:

Open-Air Museum of Old Quarrying Arts”

Area: 135Acres / ownership: Dionyssomarble S.A.

A large scale landscape project,
realized in collaboration with Aspasia Kouzoupi.



http://www.coac.net/landscape/II_Biennial/premis_rosa_barba_99_w.html

2000 Barcelona, Catalonia

1st Landscape Biennale Barcelona

Finalist: 1st Rosa Barba Award on Landscape

**1999 - 05 “Attiki Odos: Landscapes between Highway and Nature/
Ymittos Ring, micro-landscapes along the cut of Mt Ymittos”**

Sculpted Architectural Landscapes® : (N.Golanda + A.Kouzoupi)



2004 Barcelona, Catalonia

Finalist: 2004 European Prize for Urban Public Space

The Prize is annually organized by: CCCB-Barcelona, AzW-Wien, CAP-Paris, NAI-Rotterdam, AF-London, MFA-Helsinki. This project is exhibited at the European Archive of Urban Public Space.



http://urban.cccb.org/europeanArchive/htmlDocs/europeanArchive_1024.asp?gldioma=A&gDoc=D046

2003 - 04 First prize at the artistic competition organized by the metro-isap SA, for an elongated wall sculpture at the station of N. Herakleion. Realization of the project entitled **"Day and Night - Kites and Constellations"** (dimensions 30mX3mX0.5m laser-perforated inox plates, neon light, fluorescent signal colors). In collaboration with Aspasia Kouzoupi.



2004 - 05 Design and construction of urban elements for the Central square of Karditsa. Fountain (project N. Golanda, consulter A. Kouzoupi) and large bench-complexes (Golanda N., Kouzoupi A.).



2006 "DESIGNING & CONSTRUCTION OF THE LANDSCAPE OF THE MUSEUM PARK of DIONYSSOS MUNICIPALITY, Attica, Greece for the sculpted works made by Greek sculptors for the **Olympic BIENNALE 2004**. In collaboration with Aspasia Kouzoupi.

2007 Installation and exhibition of A. Kouzoupi's **SIGNAUX HYBRIDES** in the city of **Saint Tropez**. (design+construction A. Kouzoupi, consultant N. Golanda). Signaux Hybrides are a system of hybrid signalization/ public art, a concept for signalizing the cultural mutation of the city during the event **Dialogues Méditerranéens**.



2006 - 08 “Topio-genesis at Katraki Square”

Urban Landscape Design at the central square of Glyfada municipality, 0.6HA, based on the idea of the intrusion of natural dynamics into the urban territory. Collaboration: SCULPTED ARCHITECTURAL LANDSCAPES ® and Technical department of the Glyfada municipality.



http://www.domes.firma.cc/gr/issue/issue_project.php?objectid=1856

2010-12 “Focus in Motion on the Ancient Quarry of Kleonai: A Landscape by the National motorway”

Collaboration :

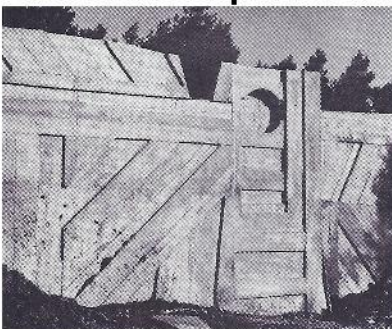
Sculpted Architectural Landscapes® : (A.Kouzoupi + N.Golanda)
and **MOREAS S.A.**



Parallel Sculpted Works in public areas

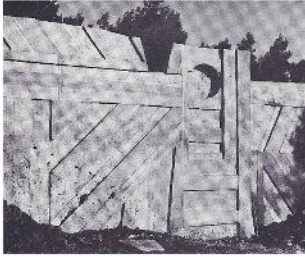
Her most important separate sculpted works in public areas are below indicatively stated:

1973-74 A sculpted Wall of 200 meters length in Ekali, Athens, Greece



Parallel Sculpted Works in public areas

Her most important separate sculpted works in public areas are below indicatively stated:



1973-74 A sculpted Wall of 280 meters length surrounding the garden of a House in Ekali, Athens, Greece

1977 - The Memorial of Doctor George Golandas, central Cemetery of Larissa, Greece

1984-85 - The National Resistance Honorary Memorial in Flisvos Square, Paleo Faliro, Athens, Greece

1985 - A sculpted Wall of 20 square meters in the central building of Emporiki Bank in Kifisia, Athens, Greece

1987 - A big marble sculpture-wall outside the central building of the Agricultural Bank of Greece, in Constitution Square, Athens, Greece



1988 - A water and light sculpted construction at the junction of Kouma & Asklipios pedestrian roads in Larissa, Greece

1989 - A wall-sculpture in the central building of Emporiki Bank in Larissa, Greece

1993 - The Memorial of Mayor of Athens Antonis Tritsis at the Athens A' Cemetery, Greece

1993 - A sculpted landscape construction at the Alsos Veikou Botanical garden, Athens, Greece.

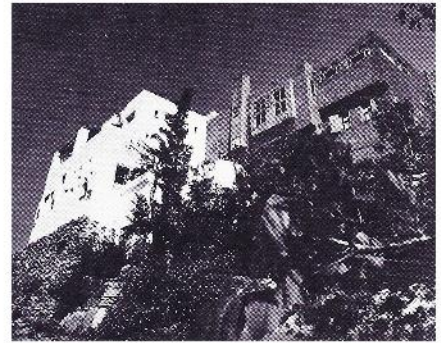


Other sculpted works and engravings of her can be found in museums and collections both in Greece and abroad, such as the **Cabinet des Estamps in Bibliothèque Nationale de Paris**, the **National Gallery of Greece**, the collections of the **Commercial Bank of Greece**, the **Katsigra Museum – Municipal Gallery of Larissa**, the **Vorre Museum**, and in other places.

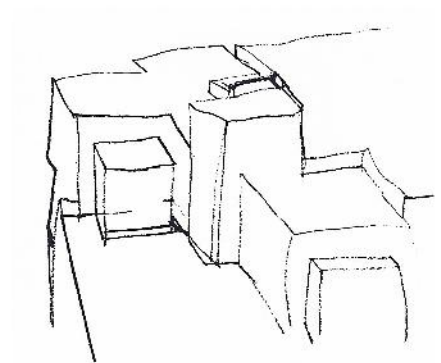
2. SCULPTED HOUSES

Since 1973 she has been drawing and erecting **sculpted houses** as land, art total interventions, i.e:

1973-74 House in **Ano Voula**, Attica, Greece



1974-75 House in **Kalamos**, Attica, Greece



1980- Six house – a small settlement in **Nikaia**, Larissa, Greece



1995-2000 House in **Kea (Cyclades)**, Greece
Sculpted Architectural Landscapes® : (N.Golanda + A.Kouzoupi)



3. THE WAY FROM 2 TO 3 DIMENSIONS

1973: 12th Biennale of Sao Paolo

1972: Ora Gallery in Athens

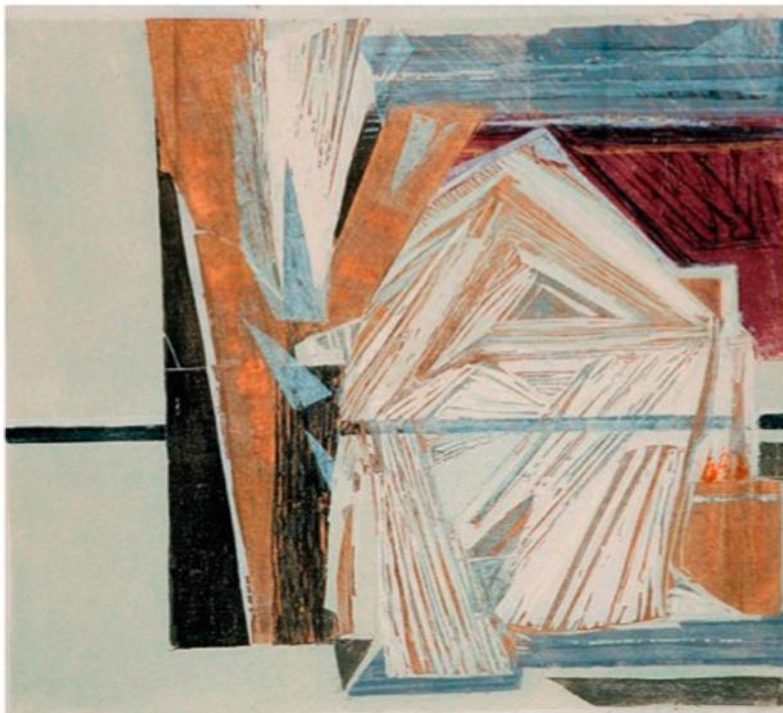
1970-1972 “Proposals for the Humanization of Public Space”



4. ENGRAVINGS

1970: Athens Art Gallery

1966-1970 “Hellenic Space I – XVII”



Exhibitions and International Art Biennales

Art Exhibitions:

1970: 9th Mediterranean Biennale in Alexandria (prize for her engravings "Hellenic Space I-XVII). Exposition in **Athens Art Gallery 1970**



1973: 12th Biennale of Sao Paolo

1973: Exhibition of the **Cabinet des Estampes** Archives, National Library of Paris

1976: Oswald Museum in Germany

1983: 14th Mediterranean Biennale in Alexandria, Athens Art Gallery

1982 – Plexiglas Constructions



1990: Official representative of the Ministry of Culture at the Exhibition of the 12th European Member-States in Tour, France, organized by the «Association pour la promotion des arts appliqués à l'environnement» (APAAE), with general subject "The waters and Europe" and title: «Quant tous les arts se jettent à l'eau».

2016: 15th International Architecture Biennale of Venice

■ Since 1995 she collaborates with Aspasia Kouzoupi, in that time still an Architecture Student in Aristotle University of Thessaloniki. In 2000 they become associates co-founding the team “**SCULPTED ARCHITECTURAL LANDSCAPES ®**”, **GOLANDA + KOUZOUPI** (Urban Landscape Designer-MAS.LA.ETHZ) collaborating in large scale, public space projects.

Landscape Architectural Biennale and Exhibitions of the Team :

1999: 1st Landscape Biennale in Barcelona

2003: 3rd Landscape Biennale in Barcelona

2005: 4th Landscape Biennale in Barcelona

2006: 10th Biennale in Architecture, Venice

2007: Hybrid Landscapes, (architectural installation in Fondation Hellenique, with 2 projects: reconverting of Old Dionyssos Quarries to an Open Air Museum of old Quarrying Art, at Dionyssos, Attica, Greece and “Attiki Odos: Landscapes Between Highway and Nature”, Paris France

2010: 6th Landscape Biennale in Barcelona

2012: 7th Landscape Biennale in Barcelona

2012: Triennale di Milano 2012

2016: 15th International Architecture Biennale of Venice

International Publications on Architecture and Art:

- Greece:
 - **Design + Art in Greece**, annual revue of the years: **1978, 1979, 1982, 1984, 1987, 1988, 1993, 1994, 1998, 2005**
Book «Attica Landscape» (presentation of Attiki Odos) & book cover (**2005**), **30/2008**
 - **Architecture in Greece**, annual revue, **2005, 2008, 2009**
 - **Anti**, issue 423, 1989
 - **Zygos**, annual edition on the hellenic fine arts
 - **Logos**
 - **Building Green**, issue 08, 2008
 - **Domes Awards**, **2011, 2013**
 - **AICA**, Congress in Delphi, Greece, 1984
 - **Contemporary Greek Architecture**, Nikos Kalogirou
 - **Sociology**, 1983
 - **Larissa 8000 Years of Youth**
 - **Aixoni**, 1992
- Germany:
 - **Baumaister**, issue 9/1978,
 - **Baumaister**, issue 7/1983,
 - **Baumaister**, issue 8/1983,
 - **Detail**, [cover including one of her drawings] issue 6/1984,
 - **Stadtbau-Details**, book, by prof Meinhard von Gerkan - [cover including one of her drawings], Ed. Rudolf Muller, 1983.
 - **Topos** landscape edition, Munich, 36/2001 and 86/2014
 - **Collection**, ed. Brown, 2007
 - **1000 X Ideas Architectural Landscapes**, ed. Brown, 2008
- Japan:
 - **Kenchiku Bunka** (architectural civilization), issue 6/1978.
- Brazil:
 - **Modulo arquitetura e arte**, issue 99/1988.
- Spain:
 - **International Landscape Architecture**, book, Arco Editorial 1998
 - **Squares**, book, **New Architecture**, Atrium 6/1988.
- England:
 - **New European Landscapes**, book, by prof. Michael Lancaster - ed. Butterworth- Architecture, London, 1994.
 - **Architectural guide-ATHENS**, by Errica Protestou-, ed Konneman London 1998.
 - **New Landscape Design**, book, by prof. Robert Holden, Laurence King Publications, London 2003 (also published in China)
 - **Sensing Spaces**, book, London Royal Academy of Arts catalogue, London 2014
- Mexico:
 - **Nueva Arquitectura del Paisaje**, book, by prof. Robert Holden, ediciones G.Gilli Mexico 2003
- France:
 - **La maison** (revue), issue 6/1983.
 - Philip Plisson –**Athènes: entre la mer et le ciel**- éditions de la Lucarne, Paris 2004
 - **d' Architectures** No 149, Octobre 2005

International Publications on Architecture and Art:

- Italy:
 - **Arte Rama, Anno II**, issue 10/1970.
 - **Paesaggi rifiutati Paesaggi riciclati**, pr. N. Trasi, 2002
 - **Interni-** tribute Athens 2004
 - **Paysage**, ed. N. Cappelletti, 2010
 - **Architetture di Cava**, V. Pavan, 2011
 - **Triennale di Milano** Catalogue 2012
 - **Topscape**, ed. N. Cappelletti, 2015
 - 15th **Venice Biennale** , Time Space Existence publication, 2016
- Switzerland:
 - **Tracès**, issue 17, Bulletin technique de la Suisse romande 2012
- Argentina:
 - **Plot**, issue 37, ed. F.Schapochnik, Buenos Aires, Jun/Jul 2017
- Council of Europe:
 - **Urban Cultural Life in the 1980s**, Strasbourg 1983
 - **Town and Culture**, Strasbourg - Bremen 1983
 - **Culture in Towns**, Prague 1993
- European Union:
 - **European Quarry Landscapes Network**,
Collected essays from the first meeting,
ed. James Douet, Teruel 2015

